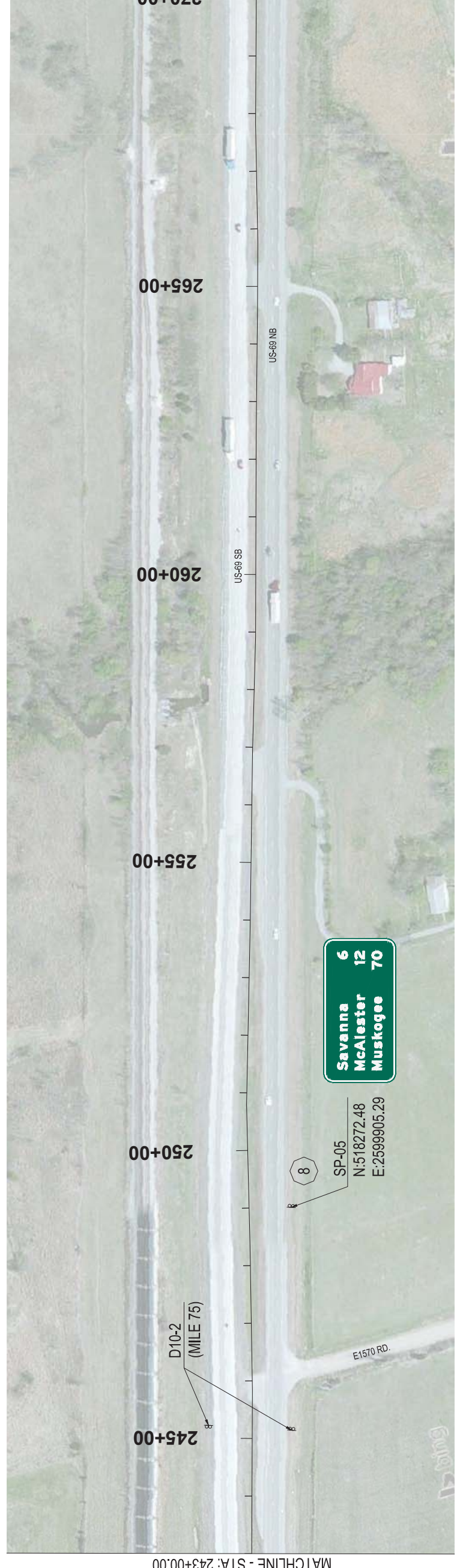
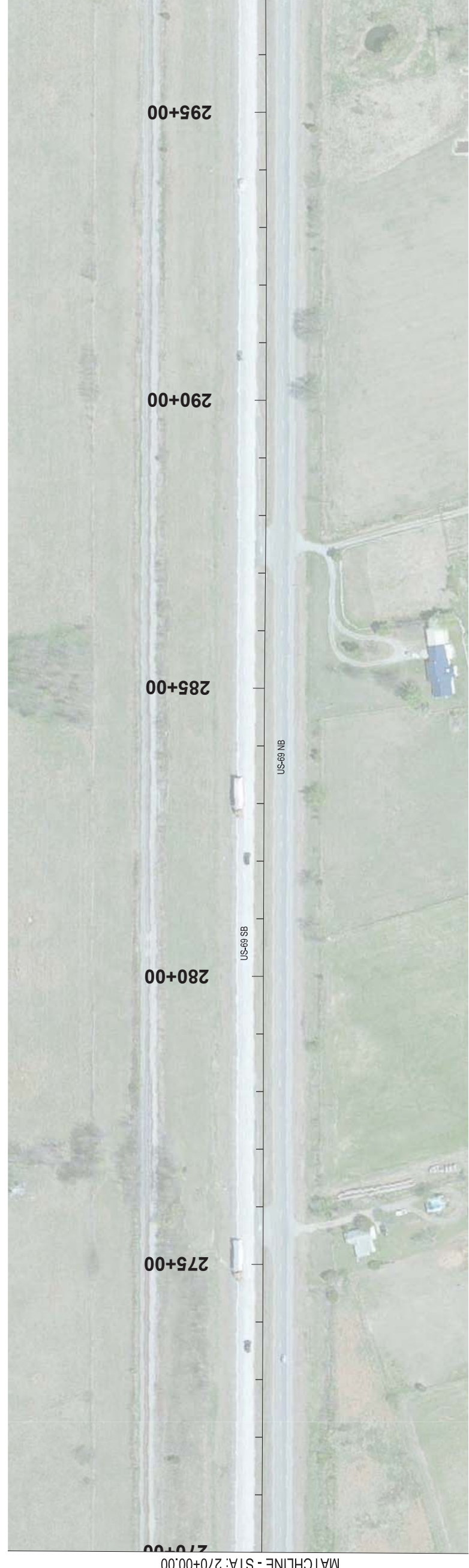
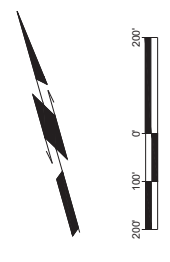


REV. NO.	DESCRIPTION	REVISIONS	DATE



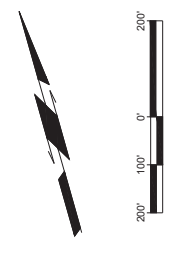
MATCHLINE - STA: 243+00.00

MATCHLINE - STA: 270+00.00



MATCHLINE - STA: 270+00.00

MATCHLINE - STA: 297+00.00



1000 WEST WILSHIRE BLVD.  
SUITE 403-E  
OKLAHOMA CITY, OK 73116  
PHONE: (405) 384-5127

**LEE ENGINEERING**

US - 69  
DIVISION 2

PITTSBURG COUNTY

**SIGNING PLAN**  
STA: 243+00 TO STA: 297+00

State Job No. 33252(04) Sheet No. 63 OF 123